



# installation instructions

YAMAHA BANSHEE 916

VISIT US ONLINE AT WWW.DMCEXHAUST.COM FOR MORE INFORMATION

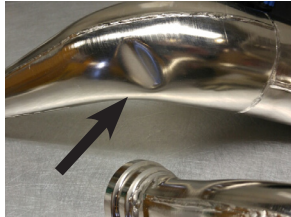
Thank you for choosing to install the finest exhaust system available. DMC uses only the latest technology to deliver big gains in acceleration, horsepower and torque, while capturing additional strength and critical weight savings.

Please read all instructions carefully and thoroughly before installing this system. Any references to "left" or "right" indicates sides as if you were sitting on the bike facing forward.

## PARTS INCLUDED

- (1) Muffler
- (2) Chrome Plated Pipes
- (2) Mid Pipes
- (2) Hi-Temp Rubber Exhaust Collars
- (1) Brake Light Spacer Kit
- (2) Black Muffler Mounts

**NOTE:** To prevent exhaust leaks, we recommend inspection and replacement of the exhaust o-rings if necessary upon installation.



**BEFORE YOU BEGIN, PLEASE NOTE:** There is a relief dent in the right side expansion chamber. This dent does not affect the power or the durability of your DMC system. This dent is placed in this position by DMC purposely to provide clearance for the water pump hose.

1) Remove the seat, the rear fender assembly, and front fender assembly. This should be easily done with just a few bolts.

2) Unbolt, but do not remove the rear tail light.

3) Remove the stock muffler, pipes, and mid pipes, but leave the upper mounts loose. (See step 9 illustration)

4) Wipe the exhaust flanges on the cylinders with a non-flammable solvent or cleaner.

5) Turn the fuel petcock to the off position. Make sure there is no source of ignition and drain the fuel line into a clean metal container. Pour the contents back into the fuel tank and clean the metal container so that ALL traces of fuel are eliminated. Install the jets as recommended and replace the carburetors. (See page 2 jetting instructions)

6) Remove the rubber O-Rings from your stock pipe and install one rubber O-Ring into the machined flange of each DMC Head Pipe. (See your stock pipe as an example.)

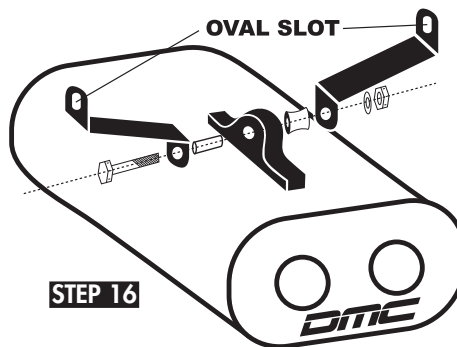
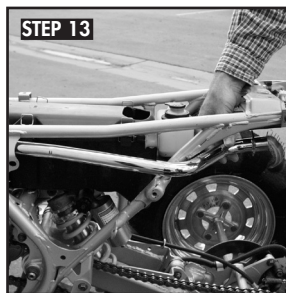
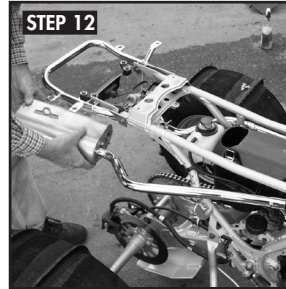
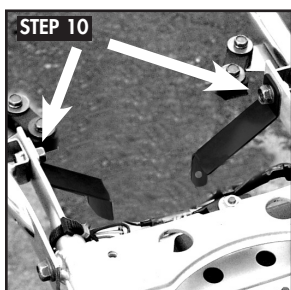
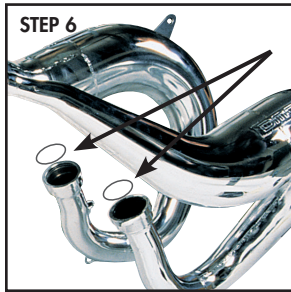
7) For easiest installation, turn your wheels all the way to the right (for right pipe installation) or all the way left (for left pipe installation). This will help the pipe clear the tie rod.

8) Position the pipe at the angle shown and place the end of the pipe inside the frame tube as shown in Illustration 8. Once inside the frame, "roll" the pipe upward onto the cylinders as shown. Secure the pipe by utilizing the stock exhaust springs. (Replace if necessary). Repeat for the other side.

9) Line the exhaust pipe upper mounts up with the stock rubber mounts. Rotate the stock mounts to adjust fit if necessary. Install the bolt through the mount. Using the 8mm Lock Nut supplied with your DMC Pipe, screw the Nut on, BUT DO NOT TIGHTEN, YET.

10) Bolt the oval ends of the two black DMC Muffler Mounts to the upper side of the top rear frame tubes. (SEE STEP 10 PHOTO)

11) Bolt the right side mid pipe to the right side of the muffler using 3 of the 5mm Flange Nuts provided. Do not overtighten these nuts. Three-Bond Blue Threadlock is recommended.



12) With the rubber connectors on the midpipes, slide the muffler and right side mid pipe on the OUTSIDE of the rear frame rail to the pipe stinger on the right side. A light spray of contact cleaner will help the installation of the pipe onto the rubber connector.

13) Slide the left side mid pipe on the OUTSIDE of the rear frame rail up to the pipe connector.

14) Using 3 of the 5mm Flange Nuts provided, bolt the left side mid pipe to the muffler. Three-Bond Blue Threadlock is recommended. Do not overtighten!

15) Center the High Temp Exhaust Collars over the mid pipe/pipe junction. Slide the entire Mid Pipe/Muffler Assembly into the rear of the pipes while being careful not to cut or tear the rubber connectors.

16) Begin securing the brackets and hardware to the muffler as shown in the diagram at left. First, insert the rubber spacer into the muffler bracket followed by the aluminum axle/sleeve.

17) Secure the muffler to the two black Muffler Mounts with the supplied bolt and washer and tighten.

18) Tighten the two black muffler mounts to the upper side of the top rear frame tubes. (SEE PHOTO FOR STEP 10).

19) Re-attach rear taillight and tighten.

20) If your Banshee is a 2002 or newer model, you must raise your taillight using the Brake Light Spacer Kit (2 Spacers, Extended Screws, and Washers) included. See image at left.

21) Check the radiator hose on the right side of the Banshee for proper pipe clearance. Re-route if needed.

22) Unless you will be using your Banshee in wet conditions, remove the airbox lid and cut a hole in the rear of the airbox lid using the cutting template on the back of this page.

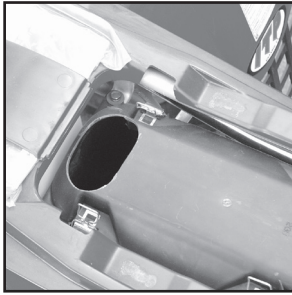
23) Re-install the seat and front and rear fender assemblies. Check all pipe bolts once again.

24) Start your Banshee in a well ventilated area and check for exhaust leaks.

25) Have a blast and leave your friends in the dust!

## BANSHEE AIRBOX CUTTING TEMPLATE

STEP 22

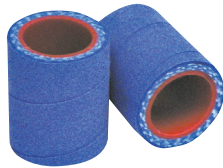


### REPLACEMENT AND OPTIONAL PARTS



REPACK PILLOW

#25911-43



BANSHEE HI TEMP EXHAUST COLLARS (2)

#25908-00



US FORESTRY APPROVED SPARK ARRESTOR

#25900-11

### JETTING SPECS

Re-jet your carburetor to the following specifications: Pilot jets #30, slides-stock, Air screws 1-1/2 turns out from closed, Needle jets-stock, Needle in the center clip, Main jets #280. We do not recommend the removal of your airbox lid. If you do remove your airbox lid, you must go to a #320 or larger Main Jet.

### MAINTENANCE

Please allow exhaust system to cool prior to washing or repair. DMC recommends using a mild soap such as dish detergent and water to wash your exhaust system. Also, you should not allow water to enter the silencer outlet while washing your bike or ATV. As we all know, sound is a major issue, which can effect whether or not we continue to enjoy our sport without offending others. Also, your system performs best and will last longer when the silencer is properly maintained. Repacking your silencer depends on the type of riding and the amount of hours on the bike. Your ears are the best guide to knowing when to repack, but as a rule, every 20-30 hours is a good guideline to inspect and replace if necessary. If and when it is time to repack, please use a DMC Repack Kits as they were tested and designed to provide the best performance. To keep your spark arrestor clean, first remove it from your muffler, then use a soft bristled brush and soapy water.

### TECHNICAL SUPPORT

If you ever lose your instructions or need additional information, simply visit the DMC website where we offer all the installation information that came with your DMC exhaust. If, at any time, there is further news regarding modifications, jetting adjustments, or other, the DMC website is a great source for obtaining the latest news.

### WARRANTY

Since we designed, developed and manufactured your DMC Exhaust to provide reliable performance, we guarantee your system for one year (from date of purchase) against defects in materials and workmanship. We are proud of our attention to the quality of manufacturing your DMC product and we stand behind our products. In the unlikely event a problem arises with your system, please contact the dealer from whom it was purchased. They can contact DMC and get your system to us for a warranty determination. A copy of your receipt will be required. We will make every attempt for a prompt repair or replacement at our determination and expense. It is important to note that our warranty is not unconditional. Although your DMC product was made with the finest materials and hand crafted to strict standards, it is not indestructible. Therefore, our warranty does not cover product damage as a result from abuse, misuse, improper installation, modifications or lack of maintenance. We also do not cover any damages whether consequential, incidental, special, contingent or otherwise: or expenses or injury arising directly or indirectly from the use of the exhaust system. As with any product, your DMC system should be expected to experience normal wear, which is not covered by any warranty. The duration of any and all implied warranties are limited to the duration of the express warranty.

[www.spectro-oils.com](http://www.spectro-oils.com)



**DMC recommends using Spectro Oils for maximum protection.**

